



MATT WHITE BATHTUB WITH CLAY TORTORA PANEL



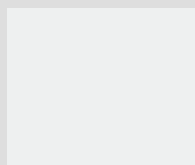
MATT WHITE BATHTUB WITH MATT WHITE PANEL

DIVINA O | FINISHES

PANELS

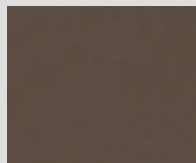


Shiny white

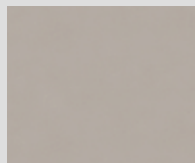


Matt white

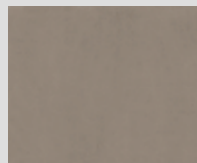
PANELS CLAY



Pece



Polvere



Tortora

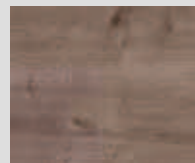
PANELS WOOD



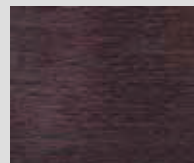
White wood



Grain



Burlington



Wenge

DIVINA O | FUNCTIONS AND EQUIPMENT (available depending on the model)



Airpool massage (16 jets) air-jet with manual on / off or sequential programm, for an **effective cellular stimulation**.



Body massage Whirlpool (6 jets) air/water with adjustable time and intensity, manual or automatic to satisfy the need of wellness.



Natural air



8 color variations of **CHROMOLIGHT** to activate the mind and excite the spirit.



Ignition Soft Touch



Head rest



Bath mounted mixer and Drop save drainpipe



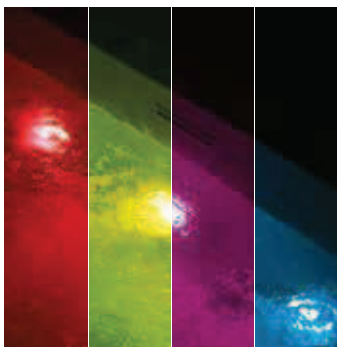
Click-Click waste column



MATT WHITE BATHTUB WITH BURLINGTON PANEL



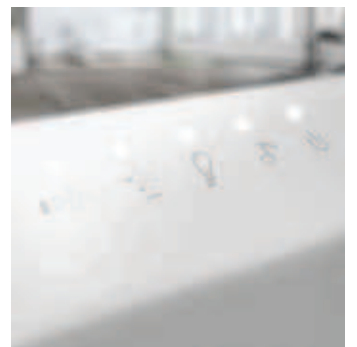
Bath mounted mixer



Whirlpool jets with Chromolight integrated system to stimulate body and mind



Surround the body with a soft cloud of oxygen thanks to the new Natural Air system



Soft-touch capacitive control on the edge of the bathtub



DIVINA 0

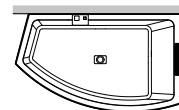
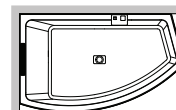
DIVINA 0

HYDROMASSAGE OFFSET CORNER BATHTUB

Design Massimo Farinatti

S VERS. LEFT

D VERS. RIGHT



Dimensions	Capacity	Code	Installation		Select mixer + bathtub finish				Select the structure / Panel			
			Right	Left	Waste column (without mixer)		Waste column + bath filler		Waste column + Bath mounted mixer		Without panels	With panels
cm	H	lt.			Shiny white	Soft white	Shiny white	Soft white	Shiny white	Soft white		

STANDARD BUILT-IN														
				D	S	-A	-U	1-A0K	1-U0K	2-A0K	2-U0K			
165 X 98	63	360	DI116594											
STANDARD WITH FRAME														
				D	S	-A	-U	1-A	1-U	2-A	2-U	0K	*	
165 X 98	63	360	DI216594										Please see table for FINISHES OF PANEL	
HYDRO AIR														
				D	S	0-A	0-U	1-A	1-U	2-A	2-U	0K	*	
165 X 98	63	360	DIY165940										Please see table for FINISHES OF PANEL	
WHIRLPOOL														
				D	S	0-A	0-U	1-A	1-U	2-A	2-U	0K	*	
165 X 98	63	360	DI5165940										Please see table for FINISHES OF PANEL	
HYDRO PLUS														
				D	S	0-A	0-U	1-A	1-U	2-A	2-U	0K	*	
165 X 98	63	360	DI4165940										Please see table for FINISHES OF PANEL	
NATURAL AIR														
				D	S	0-A	0-U	1-A	1-U	2-A	2-U	0K	*	
165 X 98	63	360	DIN165940										Please see table for FINISHES OF PANEL	
NATURAL AIR + HYDRO														
				D	S	0-A	0-U	1-A	1-U	2-A	2-U	0K	*	
165 X 98	63	360	DIP165940										Please see table for FINISHES OF PANEL	

FOR ALL OPTIONALS SEE PAGE 543, 544, 545



MATT WHITE BATHTUB WITH WHITE WOOD PANEL

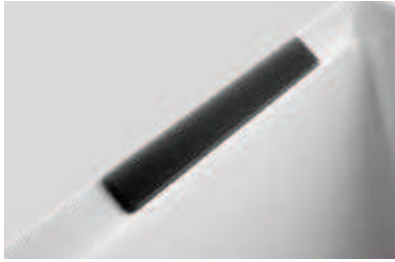
	Select the panels /price								
	ACRYLIC		WOOD				CLAY		
	1 panel bathtub finish Shiny white	1 panel bathtub finish Matt white	White wood	Grain	Burlington	Wenge	Pece	Polvere	Tortora
	1A	1U	1I	1M	1N	1V	1G	1O	1S

Bathtub code construction without panels **Code** + **Select waste + bathtub finish** + **Select the structure without panels** = Final product code

Bathtub code construction with panels **Code** + **Select waste + bathtub finish** + **Select the structure with panels (Acryl or Wood)** = Final product code

ACCESSORIES IN OPTION

HEAD REST IN EVA* for Divina and Divina O



Code

Price

POGDIV

HEAD REST IN EVA * for Divina C

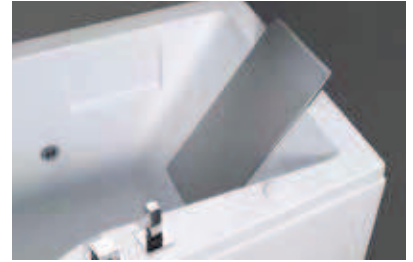


Code

Price

POGDIVC

HEAD REST IN EVA* for Iris in recess version



Code

Price

POGIRIN

HEAD REST IN EVA* for Calos 2.0



Code

Price

POGCA1

HEAD REST IN EVA * for Calypso



Code

Price

POGCAL

HEAD REST IN EVA* for Vogue

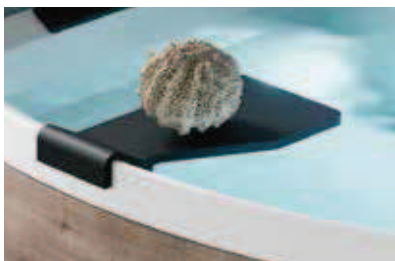


Code

Price

POGVOG

ON DECK MOUNTED SHELF for Divina, Divina C, O and F

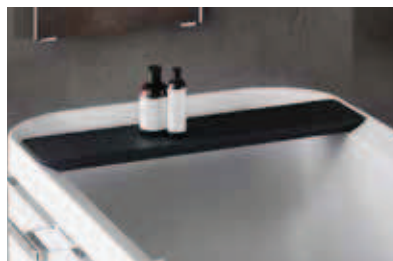


Code

Price

R90PODIV

ON DECK MOUNTED SHELF for Divina and Divina F



Width

Code

Price

70 cm

R90VADIV70

75 cm

R90VADIV75

80 cm

R90VADIV80

90 cm

R90VADIV90

BATH EDGE PROFILE



Dimensions

Code

Price

1 side

185 cm

PRV185-30

2 lati

185x85 cm

PRV18585-30

3 lati

85x185x85 cm

PRV8518585-30

*EVA is a non-toxic, antibacterial and waterproof material

OPTIONAL ACCESSORIES

BATH EDGE PROFILE



Code	Price
PRVA2-A	

KIT OF 2 RIGID FINISHING PROFILES IN PLASTIC 195 CM



Code	Price
PRVA195-30	

DRIP-PROOF DRAIN PIPE



Code	Price
R90SCDOCBV	

for Iris, Calos 2.0, Una, Vogue, Venus, Calypso

WASTE COLUMN

for bathtub without bath filler



Code	Price
COLSCAVK-K	

DRAIN COLUMN WITH INLET

for bathtub with bath filler



Code	Price
COLSCAE-K	

INSPECTION PANEL

for built-in bathtub 60x33x2 cm



Code	Price
PANISPEL-A	

IRIS, CALOS 2.0, UNA, VOGUE, VENUS, CALYPSO, BABY

Code	Price
PANISP-A	

SUPPORT BARS FOR ADJUSTABLE FEET SUITABLE FOR BATHTUBS WITHOUT FRAME

for Sense, Iris, Calos 2.0



Code	Price
PIEDVASCA	

SUPPORT BARS FOR ADJUSTABLE FEET

for Divina, Calos 2.0, Una, Vogue, Venus, Calypso



Code	Price
PIEDVASCA70	
PIEDVASCA75	
PIEDVASCA80	
PIEDVASCA90	
PIEDVASCA100	

KIT BATH SCREEN DIVINA

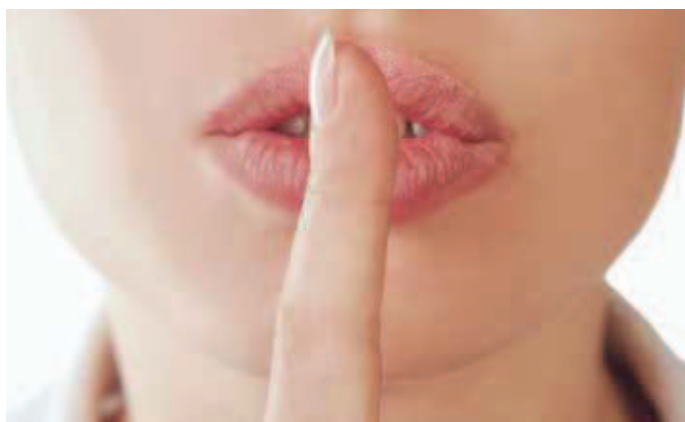


Regarding bath screen Divina please order::

1 bath screen Young 2.0 1V or 1BSV +1 bathtub kit

see page 281

KIT **HYDROSILENCE**



DIVINA DUAL

Dimensions	Structure	Code	Price
190 x 140	1 Panel	KUSDIV1F19014	
190 x 140	2 Panels	KUSDIV1FL19014	
190 x 140	3 Panels	KUSDIV1F2L19014	
190 x 140	4 Panels	KUSDIV2F2L19014	

DIVINA C

Dimensions	Structure	Code	Price
140 x 140	1 Panel	KUSDIVC	

DIVINA O

Dimensions	Structure	Code	Price
165 X 98	1 Panel	KUSDIVO	

DIVINA 160/170

Dimensions	Structure	Code	Price
160/170	4 Panels	KUSDIV2F2L160	

DIVINA 180/190

Dimensions	Structure	Code	Price
180/190	4 Panels	KUSDIV2F2L190	

DIVINA - SENSE 3-4

Structure	Code	Price
3 Panels	KUSDIV1F2L	

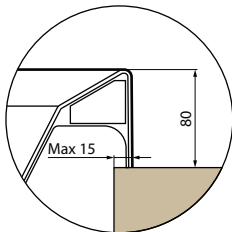
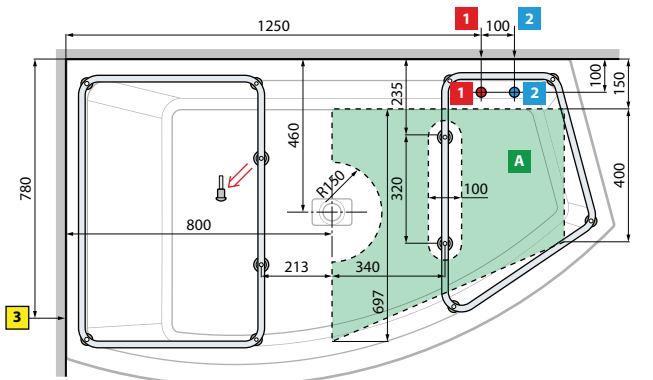
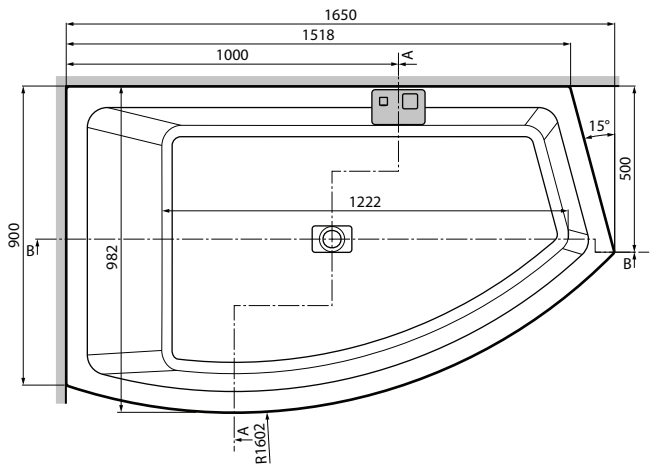
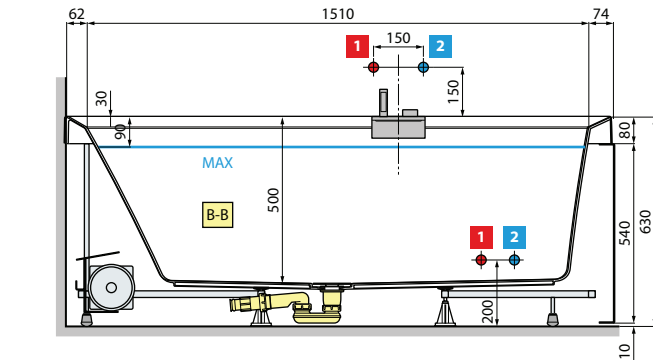
DIVINA - SENSE 3-4 CORNER

Structure	Code	Price
2 Panels	KUSDIV1F1L	

DIVINA - SENSE 3-4 IN RECESS

Structure	Code	Price
1 Panel	KUSDIV1F	

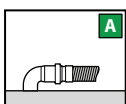
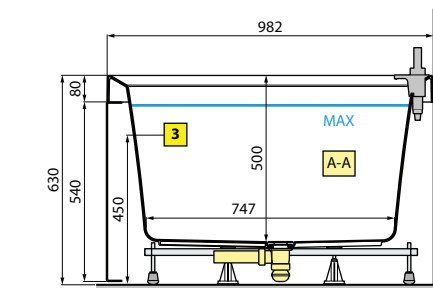
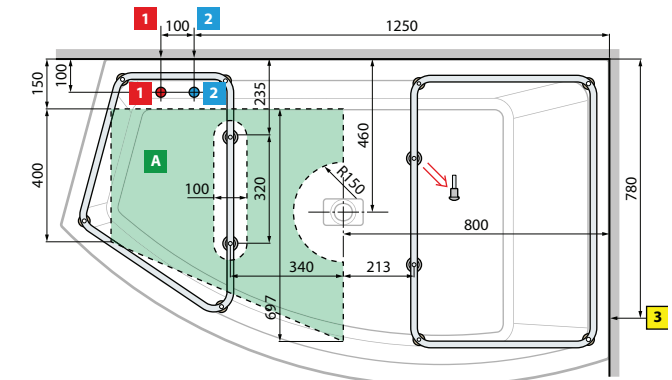
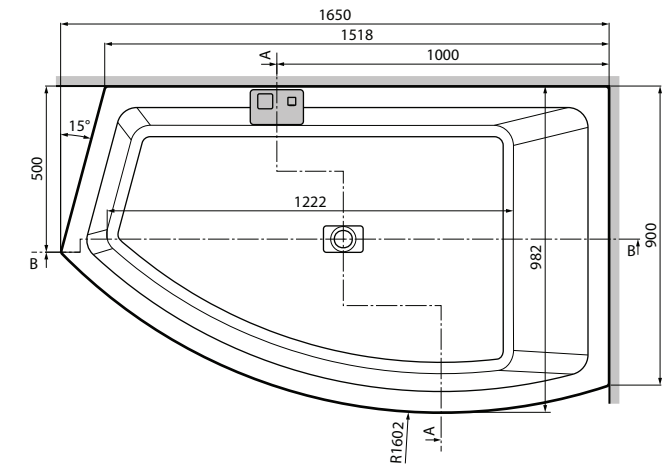
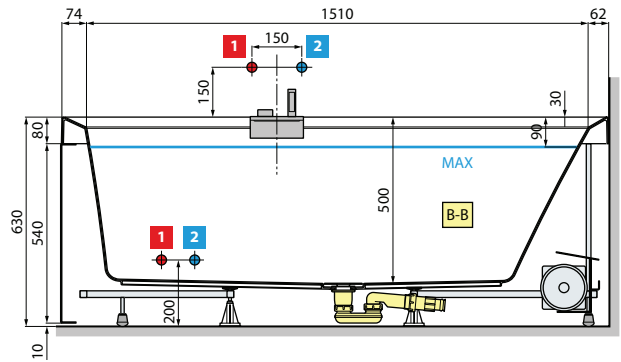
LEFT VERSION



Capacity litres

360

RIGHT VERSION



HYDRAULIC CHARACTERISTIC

16 Airpool jets
Siphon connection 1 1/2"

ELECTRICAL CHARACTERISTIC

Tension: 220-230 V
Frequency: 50 Hz
Maximum power consumption:
Whirlpool: 900 W
Airpool: 400 W
Plus: 1300 W
Natural Air: 1050 W

Install a 30mA differential switch upstream of the appliance with a multiple-pole switch with a minimum contact opening ≥ 3 mm.